

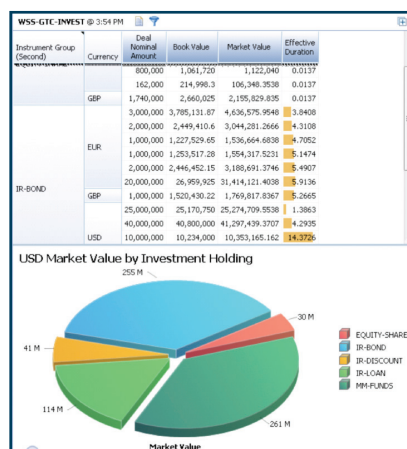
Wallstreet Suite

Comprehensive, pre-configured, reserve and asset management solution for central banks and government agencies

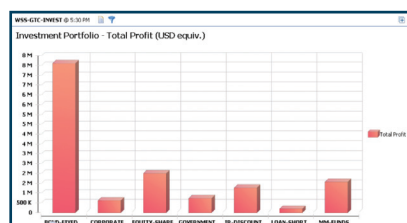
www.wallstreetsystems.com



FACT SHEET: Wallstreet Suite INVESTMENT MANAGEMENT DASHBOARD



Asset class allocation



Asset class P&L attribution

Accurate and informative reporting dashboards are critical to the efficient management of the investment operation. Investment Managers and middle office Risk Managers have a need for a dashboard that provides them with a holistic view of their investment operations activity, with views of their positions and risk activity all in one easy to use tool. They need a single display of their trades, positions, liquidity and market risk.

The dashboard application of Wallstreet Suite delivers all reporting information in one window, regardless of its source. The user can create multiple views, showing information from across the entire system. The dashboards harness a wide range of powerful features including pivot tables, filters, styles and charts, all with a user friendly 'drag-and-drop' build capability. Now users can build their own real-time view of vital data relating to all parts of their investment operation, allowing them to make rapid decisions, empowering them with information to effectively manage the business.

BUSINESS CHALLENGES

For information on their trade history, positions, compliance, risk and exposures, Investment Managers have previously relied on static printed reports provided to them on a daily basis. Some Investment Managers have been able to log onto their Investment Management System and run their own report when required, but this can often be time consuming. Specific information had to be provided on an ad hoc basis, often requiring of valuable investment team member time and effort to prepare.

BUSINESS SOLUTION

Multiple reports – The Wallstreet Suite Dashboard provides the Investment Manager with a full range of reports on all aspects of his or her investment operation, from the transaction status, market value, positions, limits, exposures and risk. The Investment Manager is able to have multiple reports open and displayed simultaneously, giving a holistic view of the business.

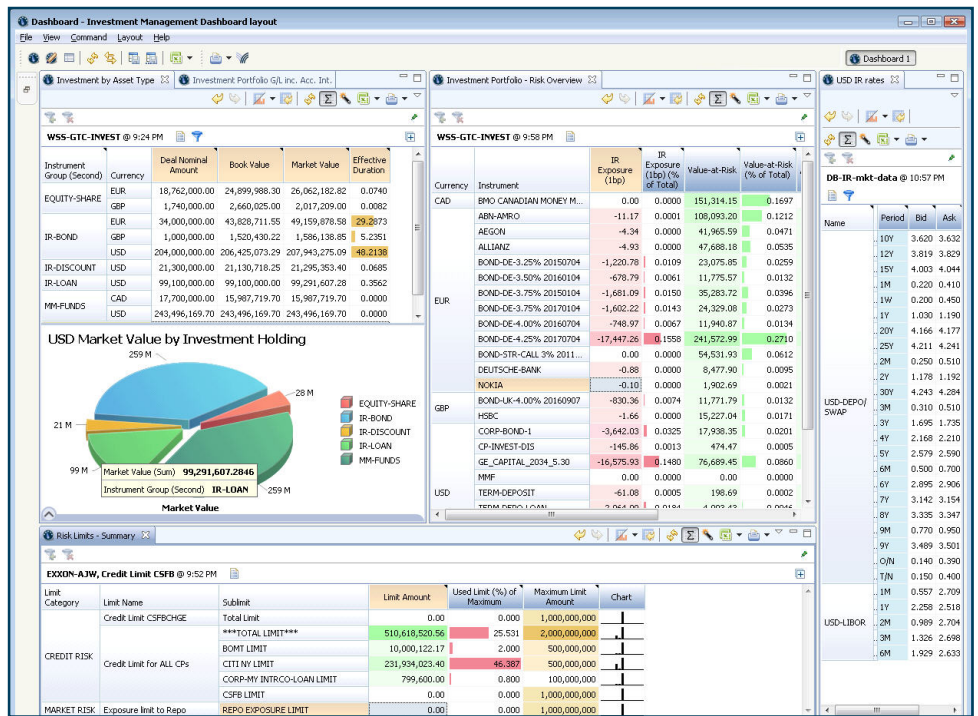
Drag & drop – The Investment Manager can drag and drop reports to any part of the screen and then resize the reports to suit his or her needs. Multiple tabs can be created, allowing instant access to different types of reports. For example tabs for position, liquidity, risk and accounting.

Filters – In addition the Investment Manager can filter any report or re-group the report based on any field, all from within the dashboard. Reports can be displayed graphically and

colour coding can be applied, for example to distinguish minimum or maximum value columns. Totals or averages can be calculated within the dashboard report. It is possible to filter out single or multiple values, patterns, ranges and top or bottom values. Filters can be also marked as favorites and used quickly in data view. The dashboard enables construction of source data filters.

Pivot tables and charts – In addition to pivot tables it is also possible to present the data in the form of charts. The data view can show pivot table, chart, or both. Charts are configured by dragging and dropping relevant fields into the chart axis. Supported chart types include pie, line and bar charts. It is possible to group small values into one component, define number precision or abbreviate numbers. There is also a handy undo and redo button.

Micro-charts – Allow the Investment Manager to see values as graphs, highlighting trends or exceptions.



An Investment Manager's dashboard, displaying trade information, positions, limits, market value, risk figures and market data

© Wall Street Systems Delaware, Inc. All rights reserved.

CONTACT US

North America HQ
+1 212 809 7200
info@wallstreetsystems.com

Europe HQ
+44 (0) 20 3170 3000
www.wallstreetsystems.com

Asia HQ
+65 6232 2365



WALLSTREET
SYSTEMS

Wall Street Systems – Empowering Treasury, Trading and Settlement